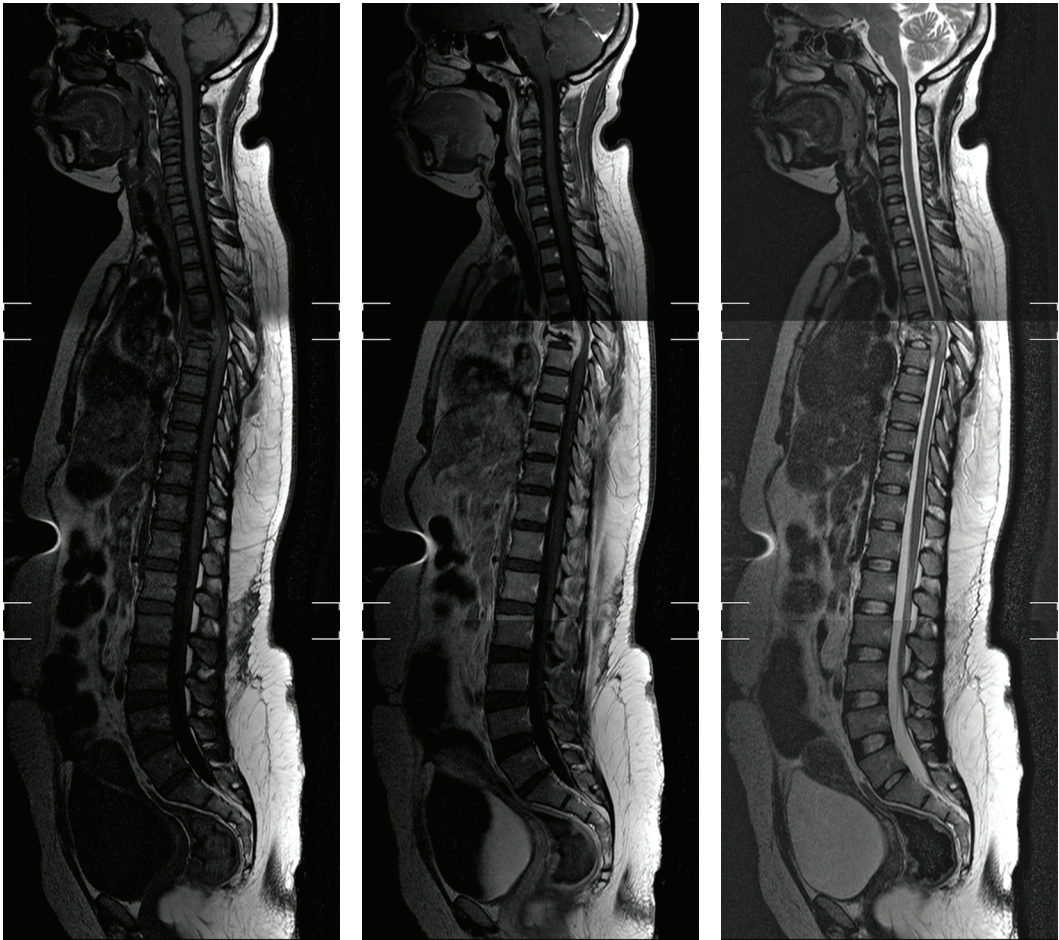
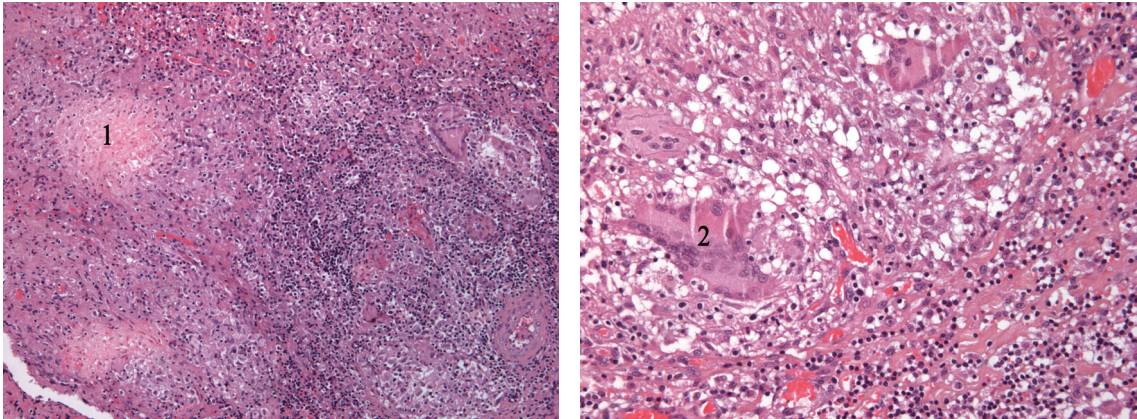


# Iconographie



Dossier 25 – Question 4



Dossier 25 – Question 6

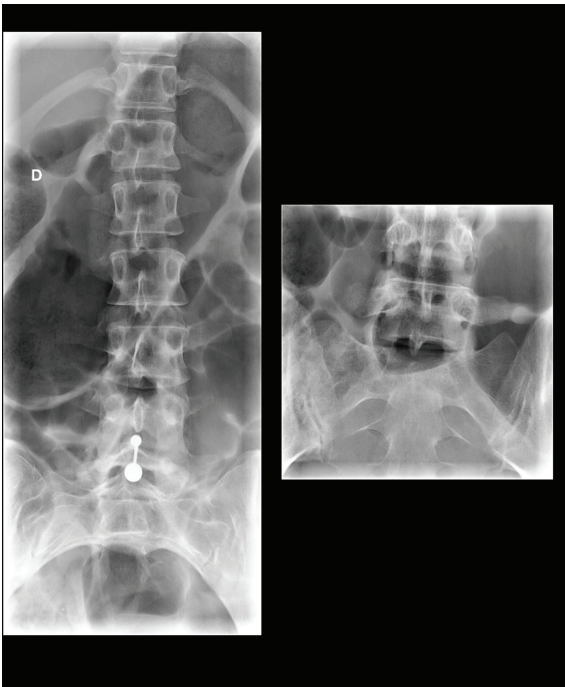
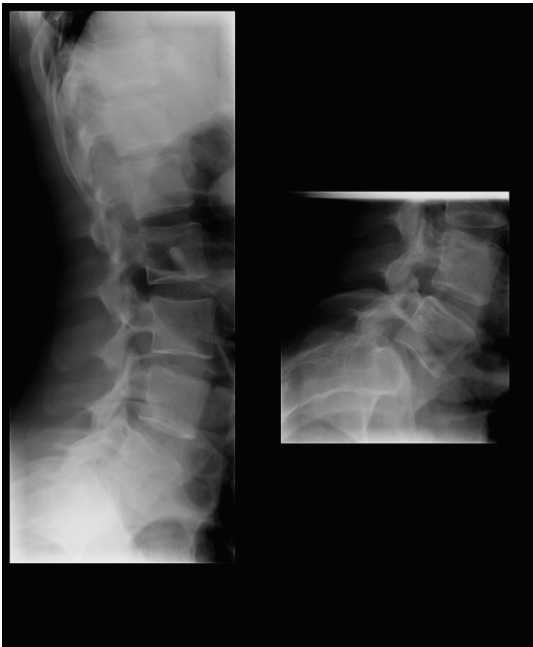


Dossier 22 – Question 4



Dossier 22 – Question 4





Dossier 22 – Question 11

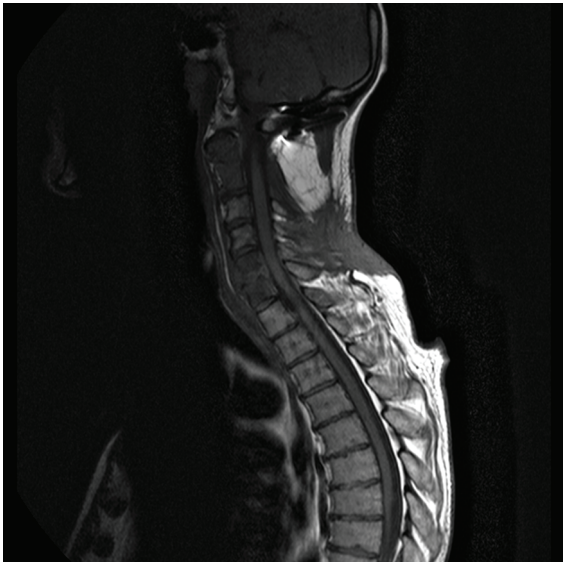


Dossier 3 – Question 6

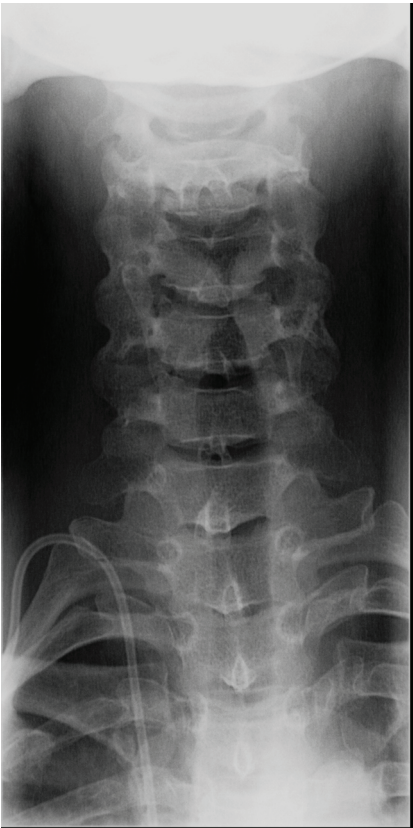




Dossier11 – Question 2



Dossier11 – Question 10



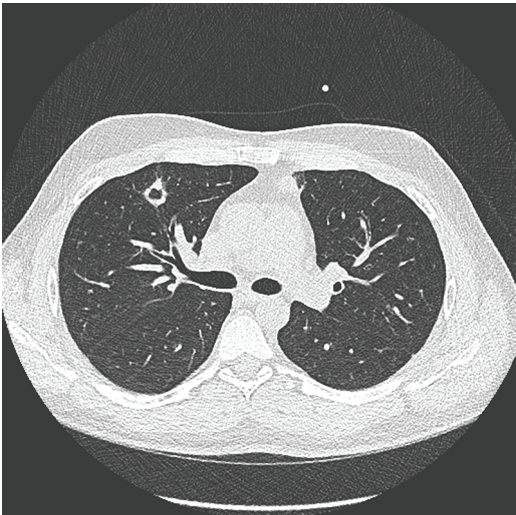
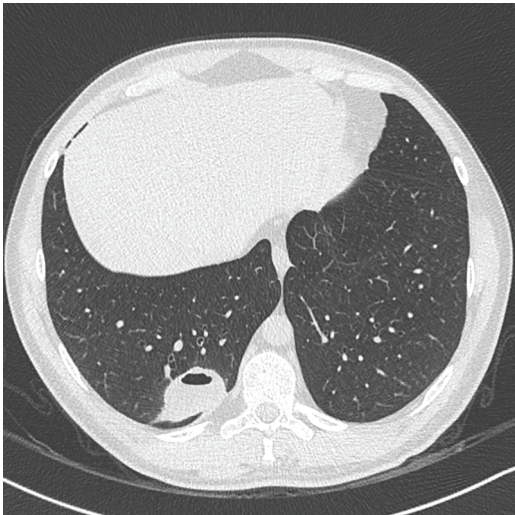
Dossier 23 – Question 9



Dossier 23 – Question 9

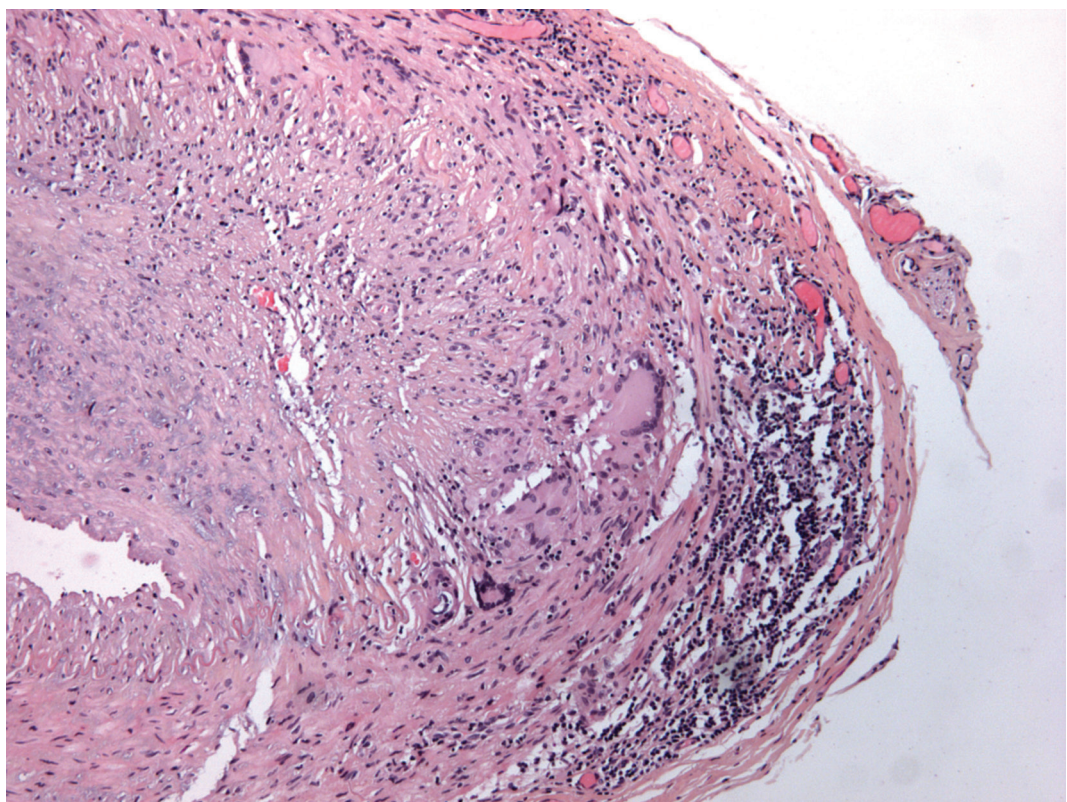


Dossier 30 – Question 6

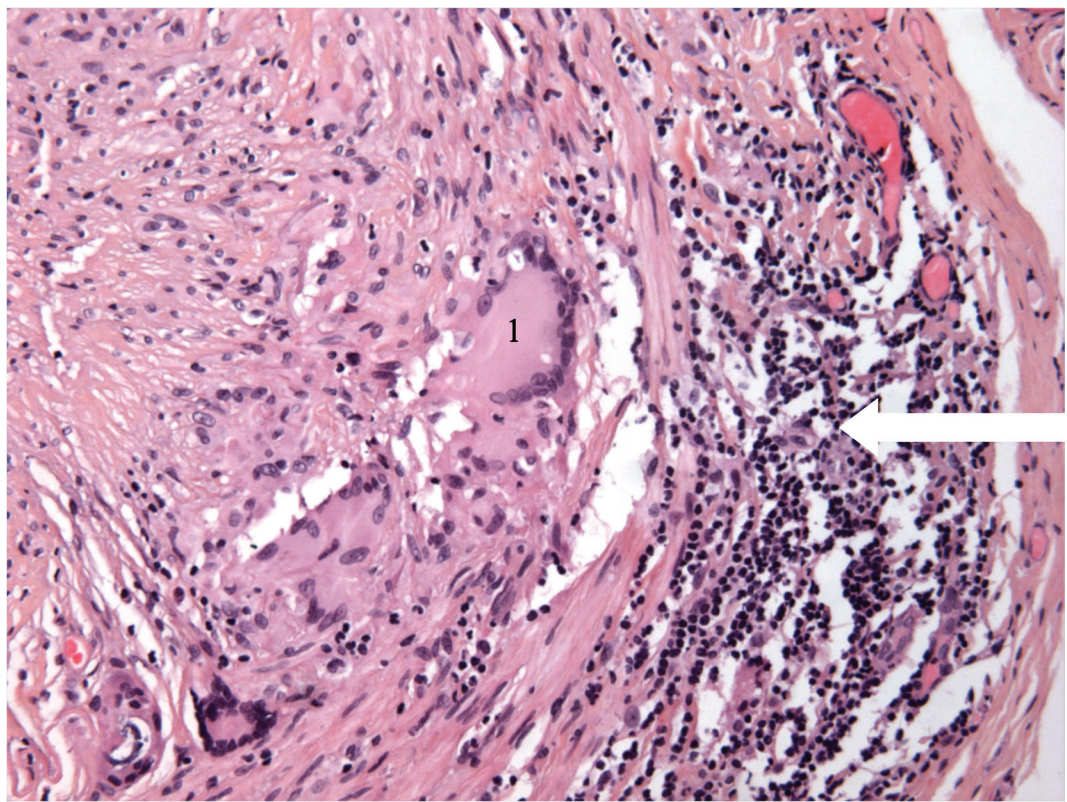


Dossier 33 – Question 11





Dossier15 – Question 9



Dossier15 – Question 9

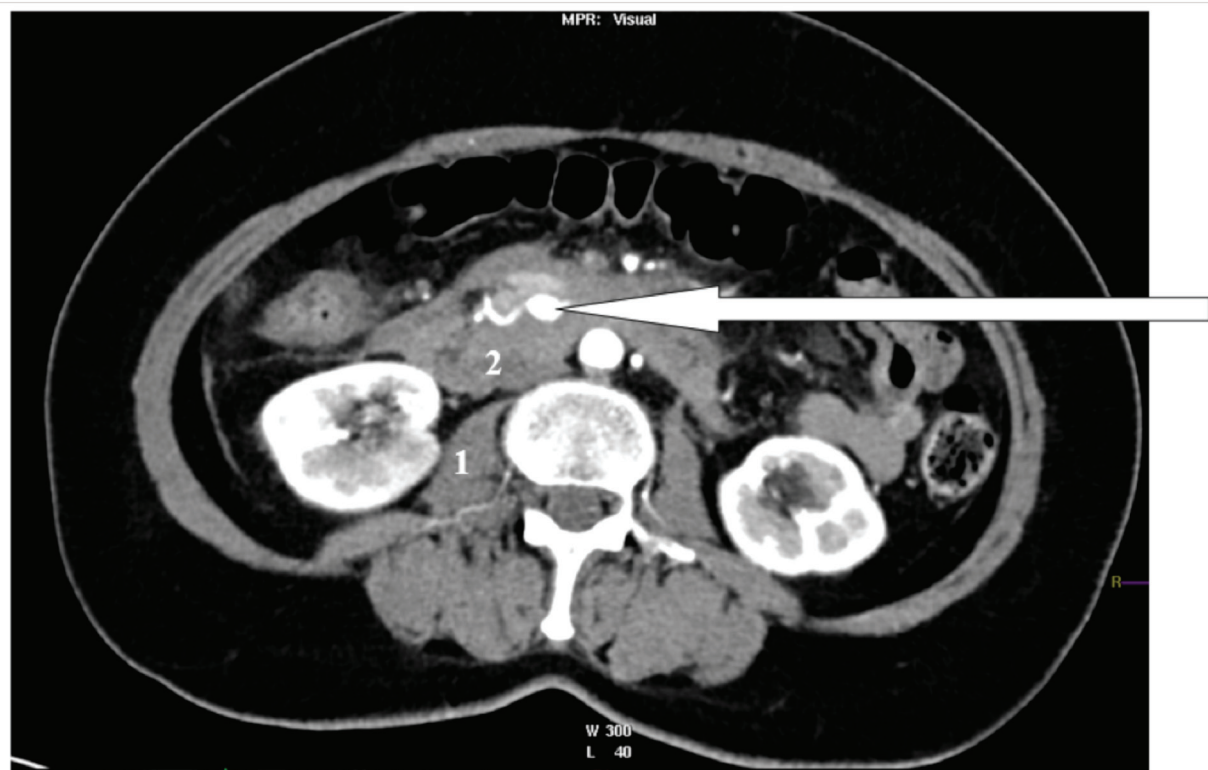




Dossier 7–Question 2



Dossier 7–Question 2

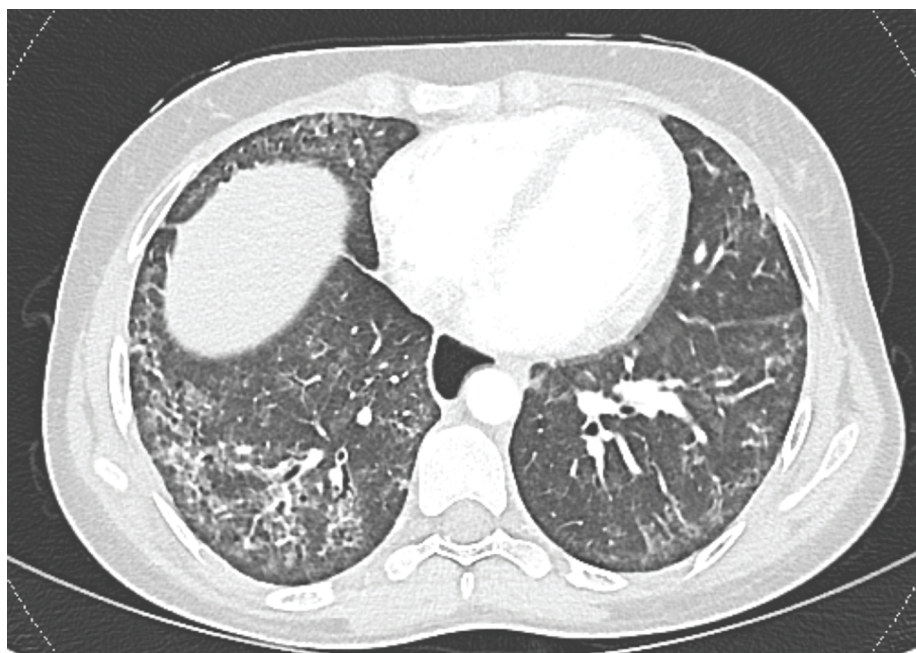


Dossier 24 – Question 13

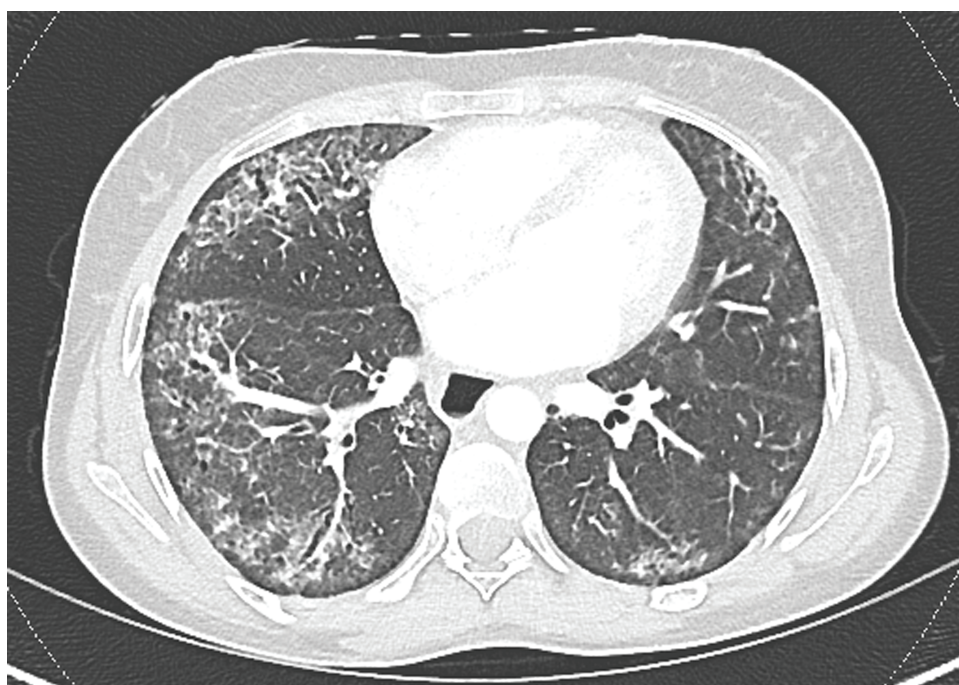


Dossier 29 – Question 5





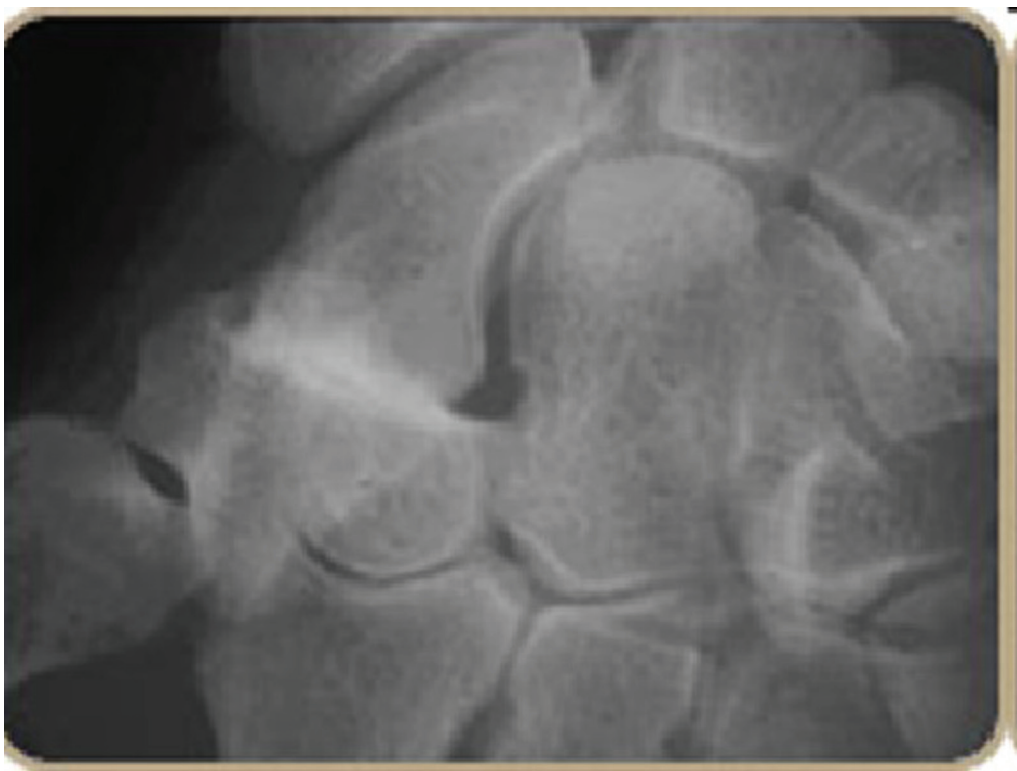
Dossier 29 – Question 13



Dossier 29 – Question 13



Dossier10 – Question 6



Dossier10 – Question 12

INDICATIONS:					
RESULTATS					
Mesures réalisées sur un appareil GE Lunar iDXA mis en service en juin 2014					
Site	Région	Date de l'examen	DMO	Jeune Adulte T-score	Age Egal Z-Score
Rachis AP	L1-L2	05/02/2016	0,844 g/cm²	-2,5	-0,1
DualFemur	Col Gauche	05/02/2016	0,750 g/cm²	-1,9	0,5
DualFemur	Col Droit	05/02/2016	0,774 g/cm²	-1,7	0,7
DualFemur	Total Gauche	05/02/2016	0,832 g/cm²	-1,4	1,0
DualFemur	Total Droit	05/02/2016	0,779 g/cm²	-1,8	0,5
Av.-bras Gauche	Radius 33 %	05/02/2016	0,692 g/cm²	-2,1	0,8
*variation significative avec 95% de confiance à partir d'une variation moyenne de 0,030 g/cm²					

Dossier 20 – Question 13

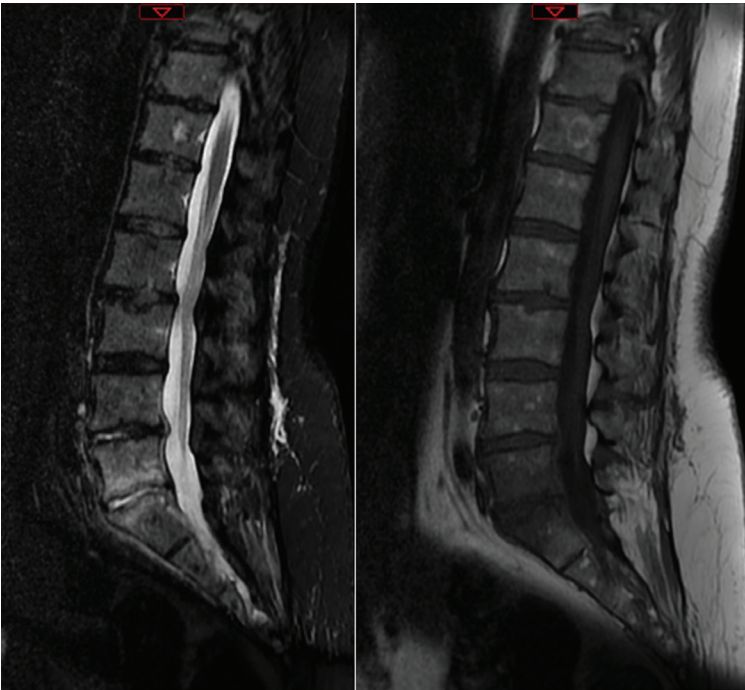


Dossier 20 – Question 3

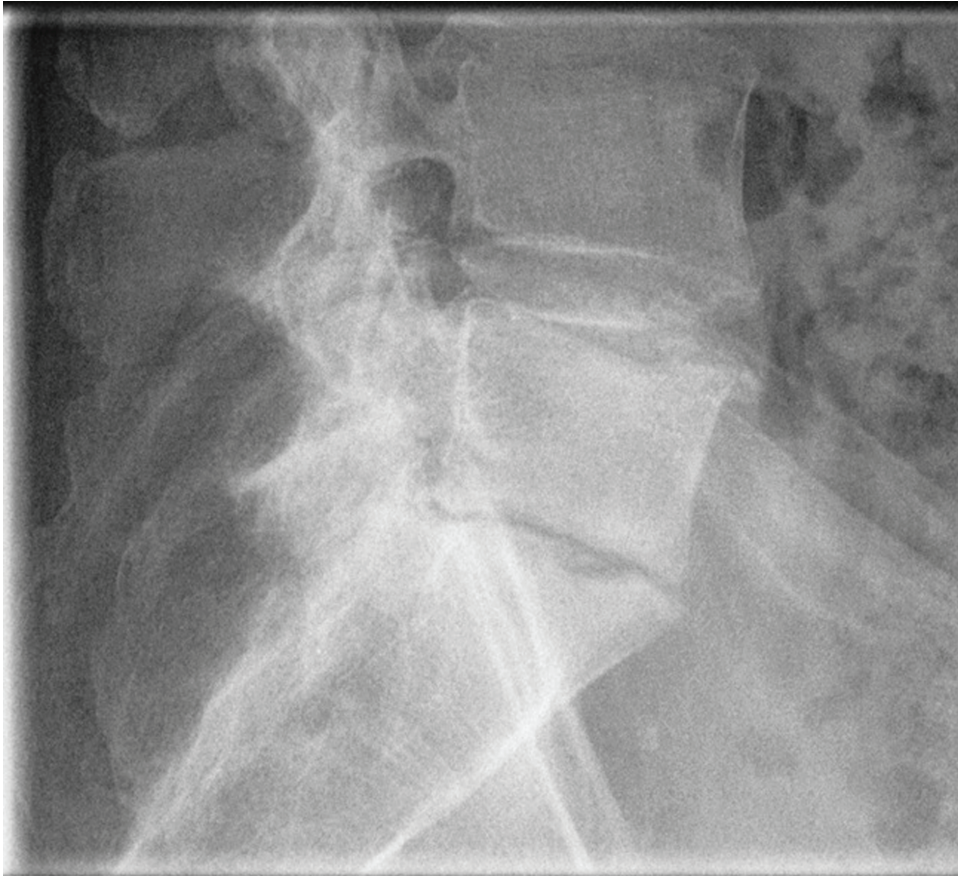




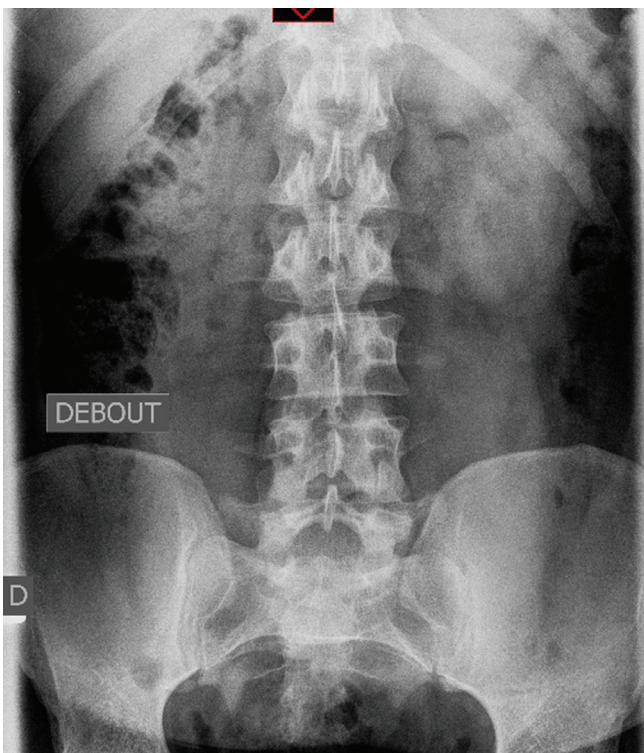
Dossier 20 – Question 5



Dossier 9 – Question 6



Dossier 9 – Question 15



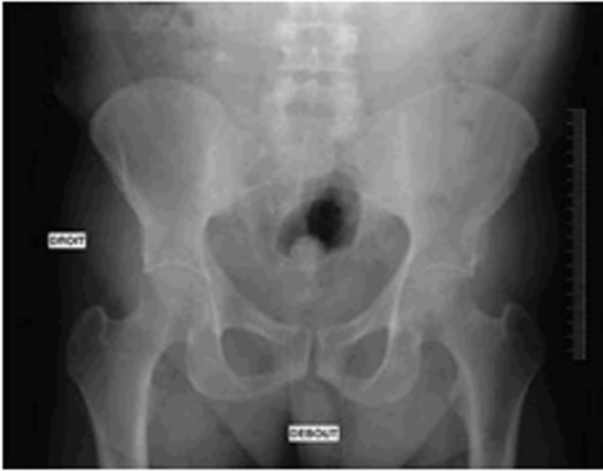
Dossier 28 – Question 10



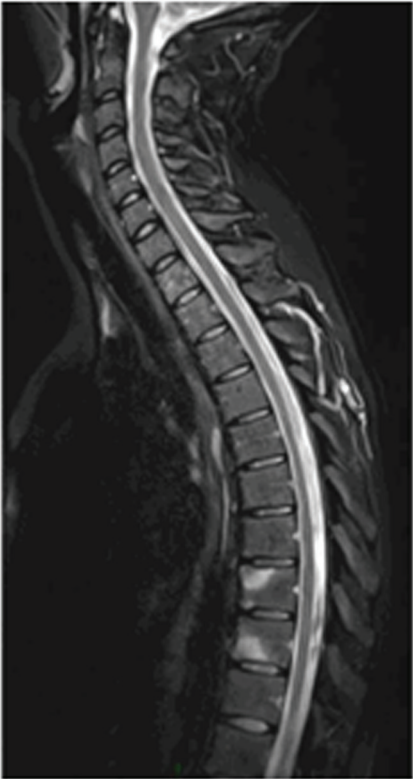
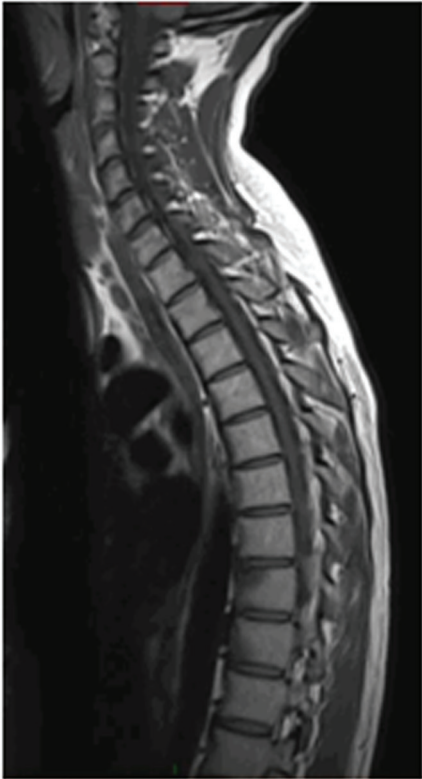


Dossier17 – Question 5

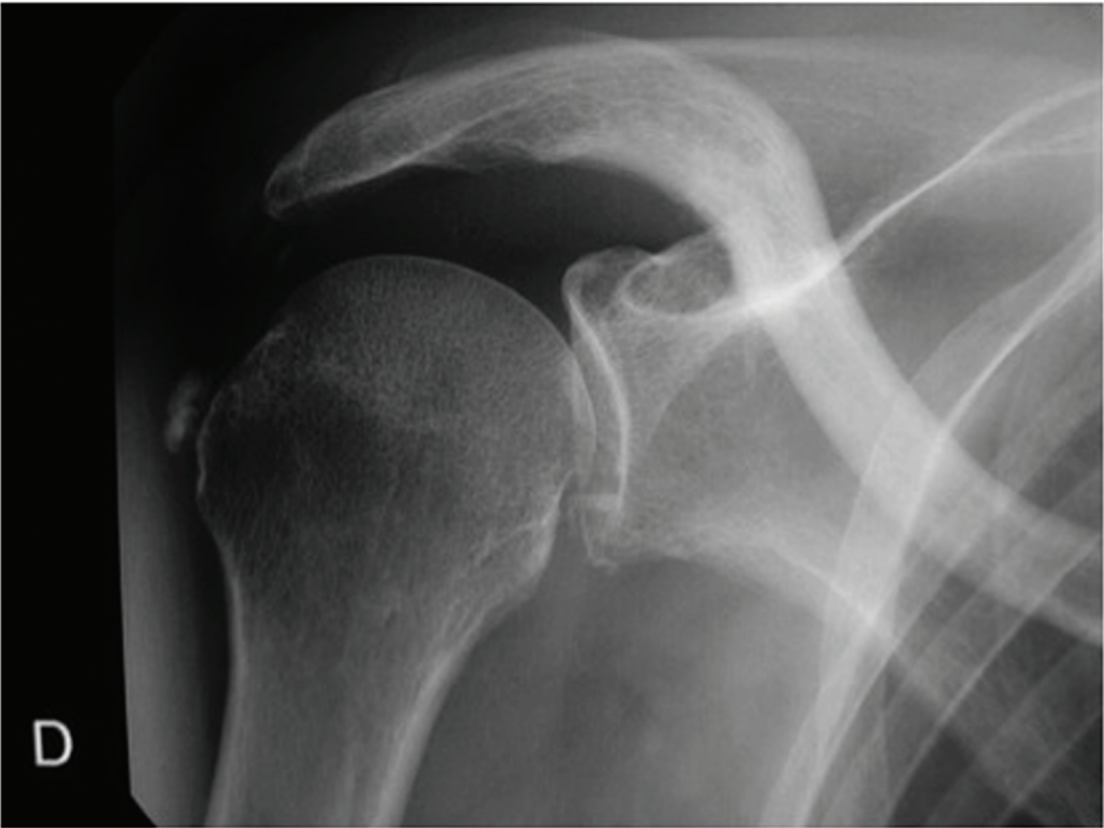




Dossier 27 – Question 7



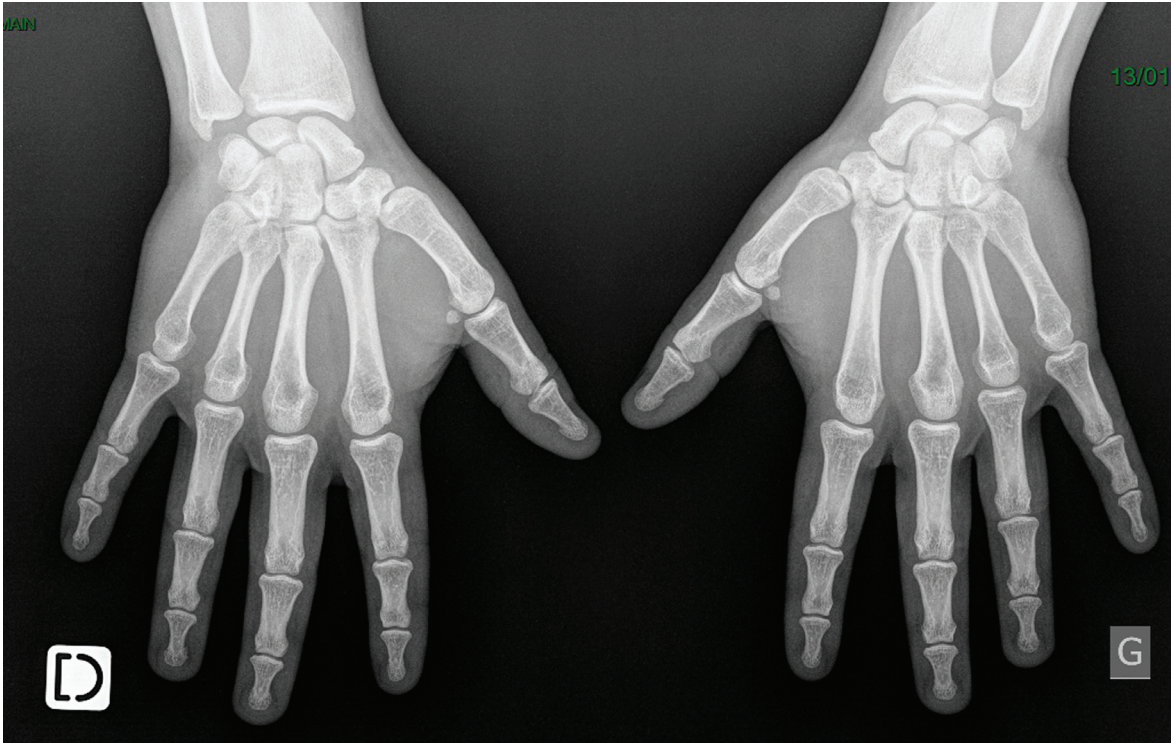
Dossier 27 – Question 4



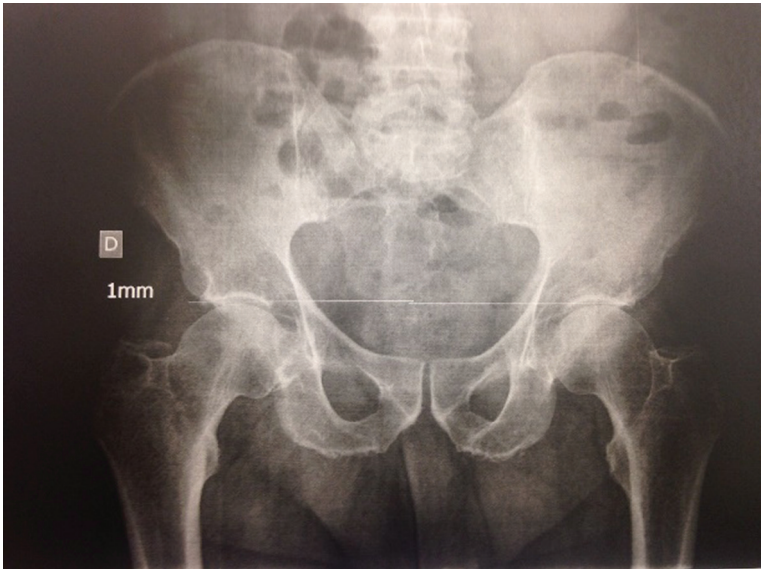
Dossier 26 – Question 4



Dossier 5 – Question 8

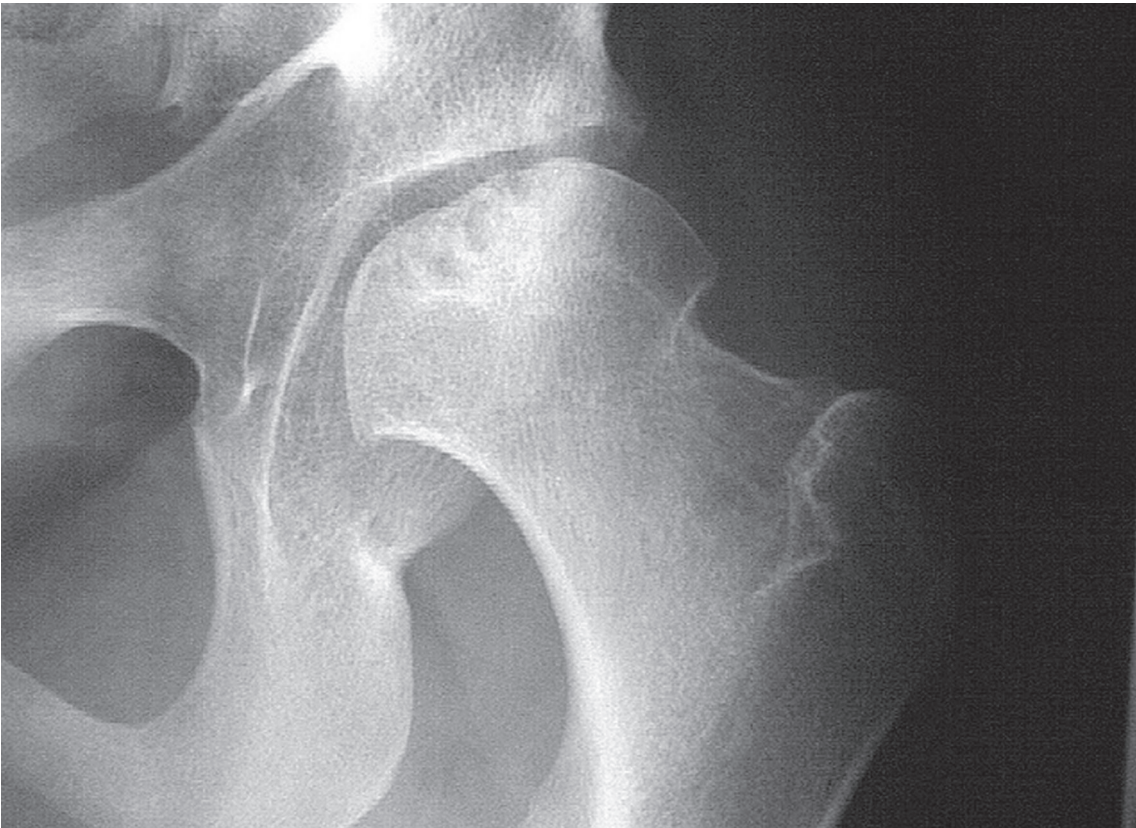


Dossier 5 – Question 11

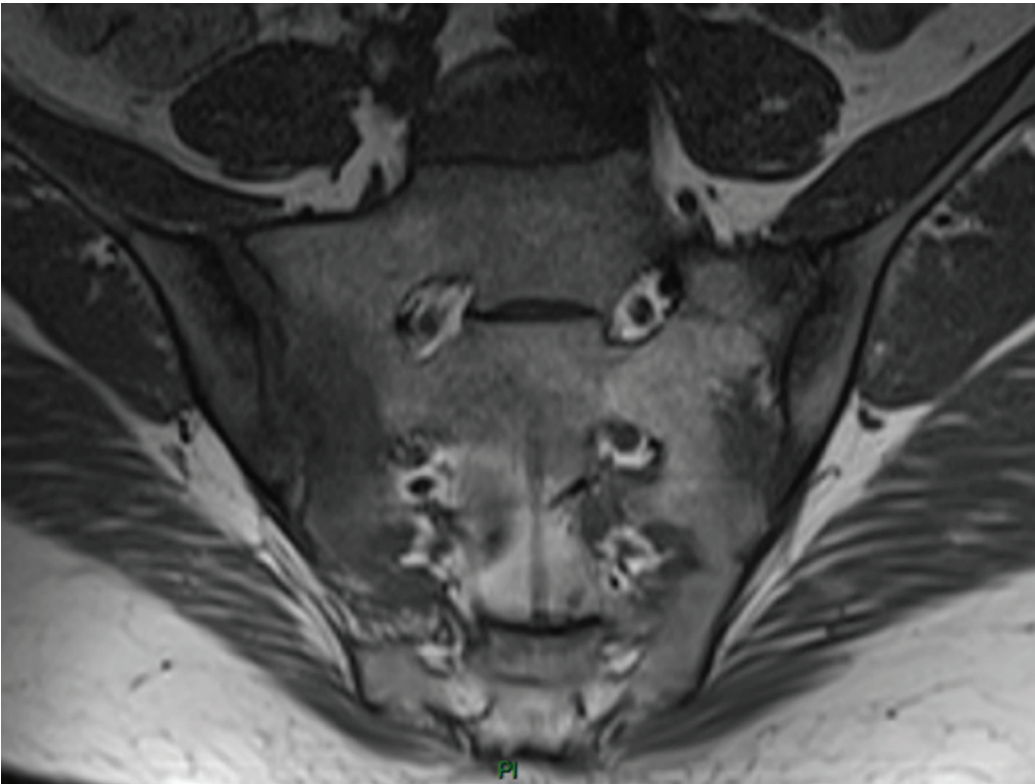


Dossier 5 – Question 4

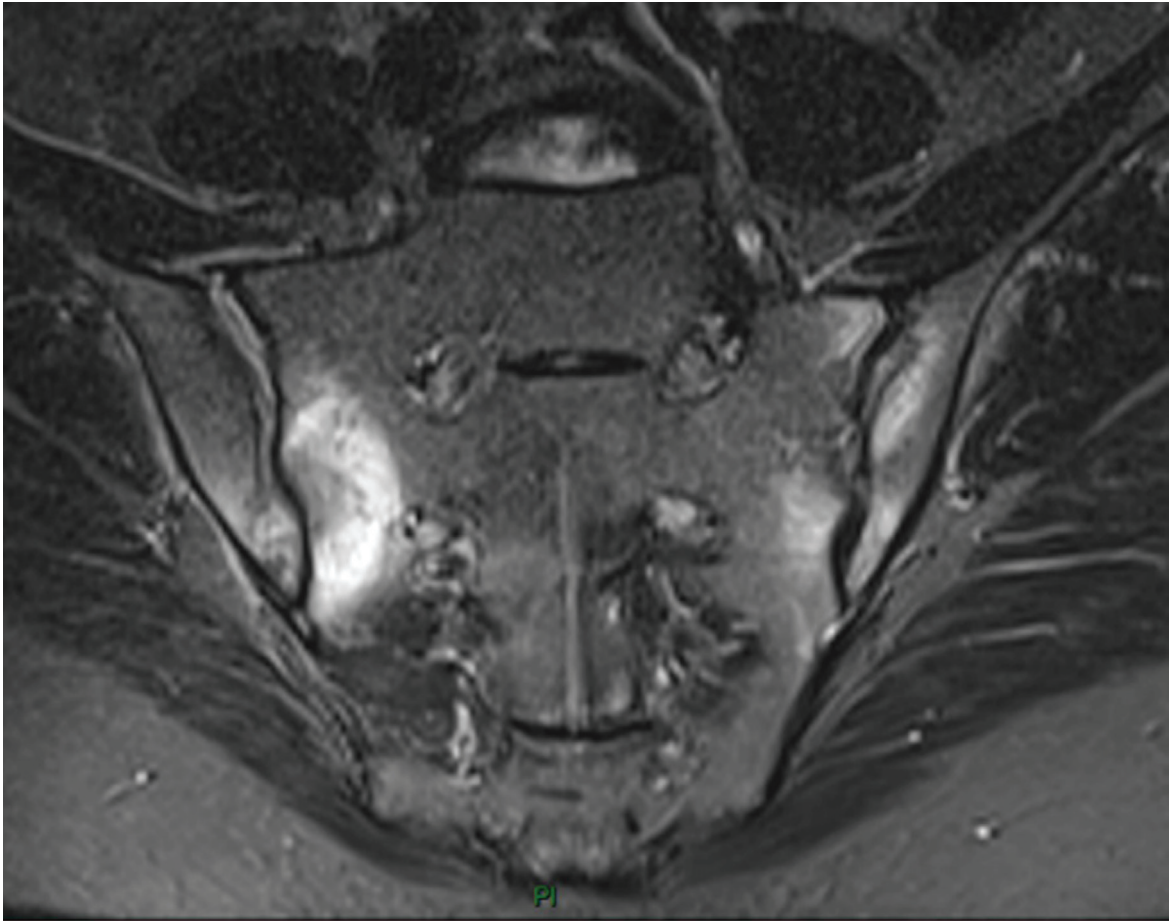




Dossier 5 – Question 5



Dossier 12 – Question 15



Dossier12 – Question 15

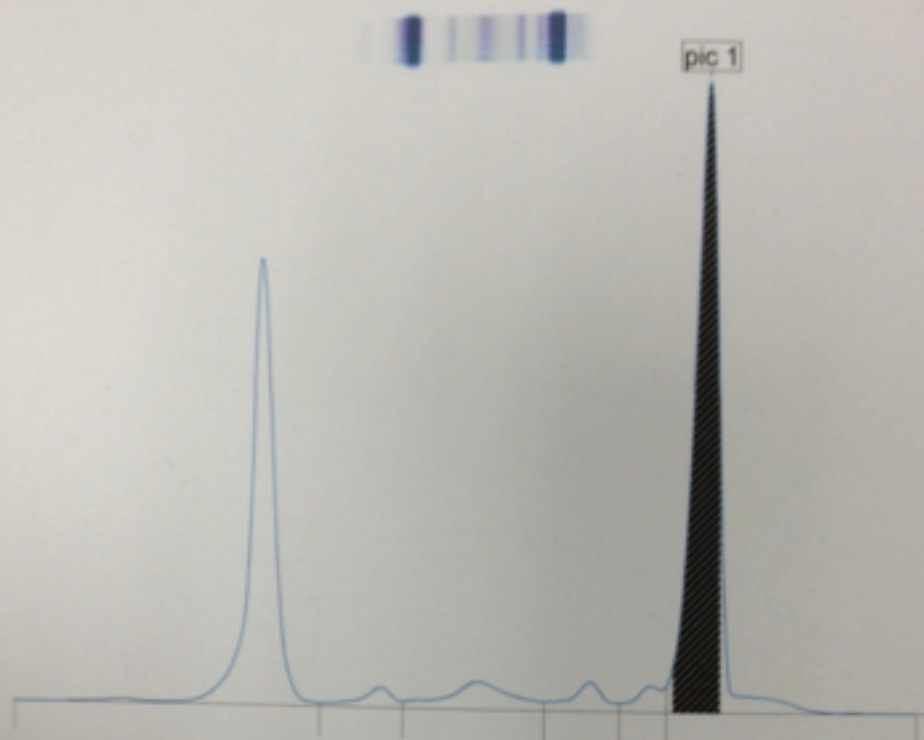




Dossier 34 – Énoncé

## Electrophorèse capillaire des protéines sériques

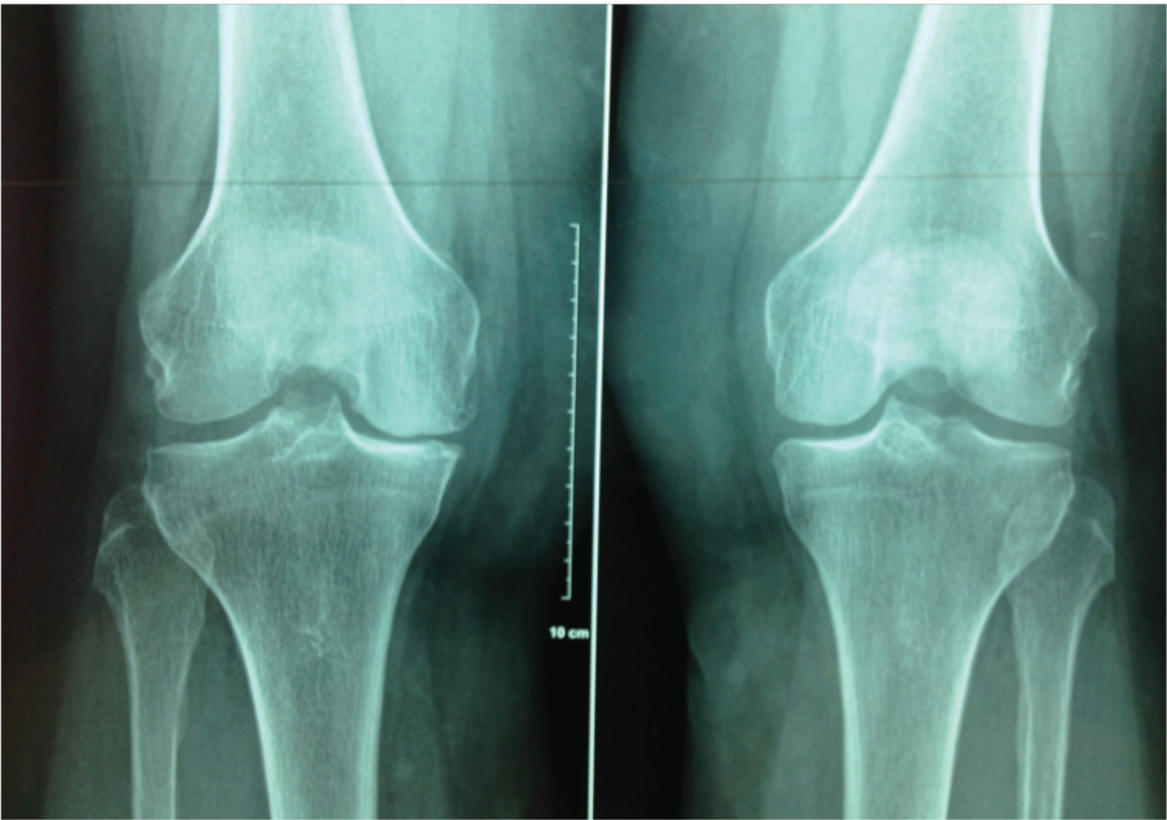
(technique réalisée sur Capillarys 2 - SEBIA)



Protéines totales = 106 g/l

Nom	%	Normales %	g/L	Normales g/L
Albumine	36,8	55,8 - 66,1	39,0 <	40,2 - 47,6
Alpha 1	2,2	2,9 - 4,9	2,3	2,1 - 3,5
Alpha 2	5,8	7,1 - 11,8	6,1	5,1 - 8,5
Beta 1	3,1	4,7 - 7,2	3,3 <	3,4 - 5,2
Beta 2	2,4	3,2 - 6,5	2,5	2,3 - 4,7
Gamma	49,7	11,1 - 18,8	52,7 >	8,0 - 13,5
pic 1	44,8		47,5	

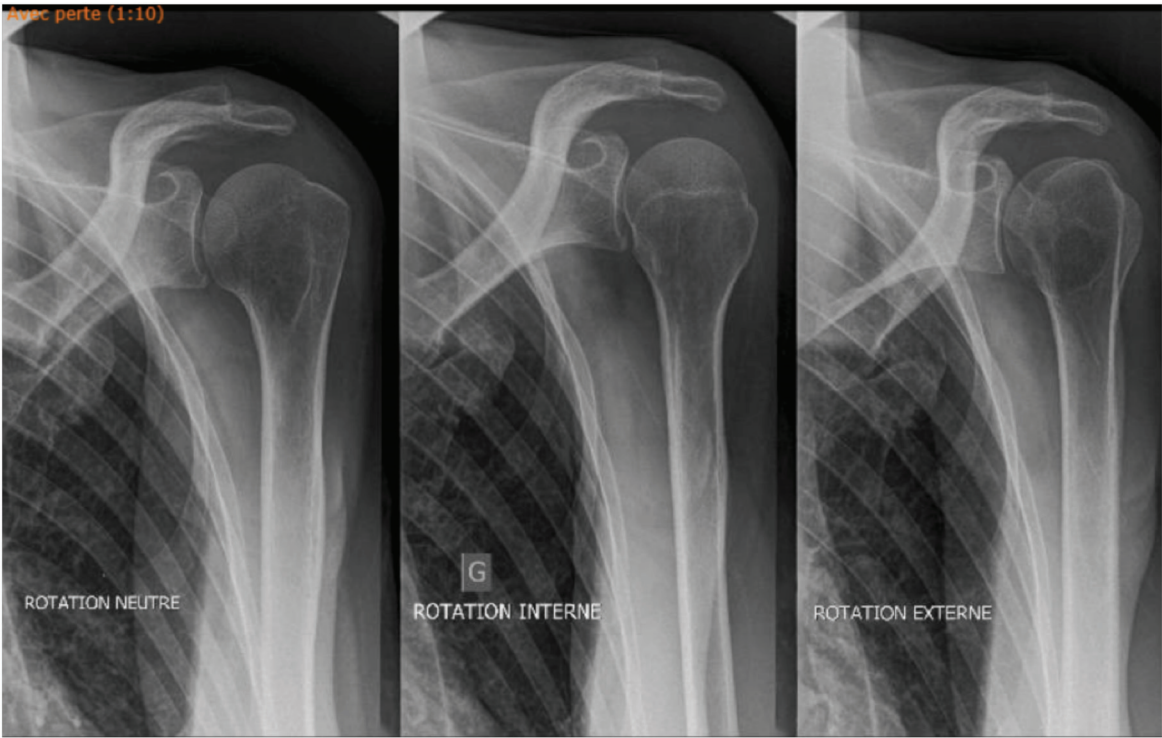




Dossier 2 – Question 6



Dossier 16 – Question 5



Dossier14 – Question 4



Dossier14 – Question 14





Dossier 14 – Question 14



Dossier1 – Question 4