

どうぶつ (動物)



ねこ (猫)
chat *neko*



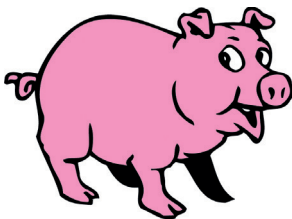
いぬ (犬)
chien *inu*



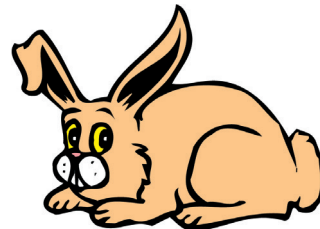
うま (馬)
cheval *uma*



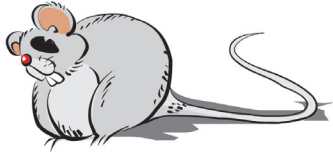
かえる (蛙)
grenouille *kaeru*



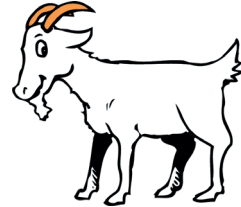
ぶた (豚)
cochon *buta*



うさぎ (兔)
lapin *usagi*



ねずみ (鼠)
souris *nezumi*



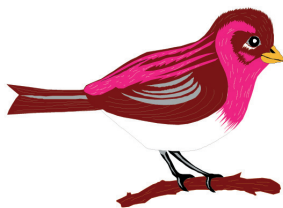
やぎ (野羊)
chèvre *yagi*



うし (牛)
vache *ushi*



かも (鴨)
canard *kamo*

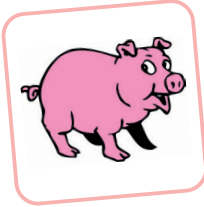


とり (鳥)
oiseau *tori*



にわとり (鶏)
poulet *niwatori*

1 Classe les animaux en distinguant les animaux de la ferme et les animaux familiers.



Animaux de la ferme

Animaux familiers

.....
.....
.....
.....

.....
.....
.....
.....

2 Qui mange quoi ? Relie les animaux à leur alimentation.

ねこ

うさぎ

いぬ

ねずみ



3 Reconstitue le nom des animaux.

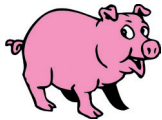
や ま う ぎ う と り
に わ し い こ ね ぬ

1. 2. 3.
4. 5. 6.

4 Écris le nom des animaux.



1.



2.



3.



4.



5.



6.



7.

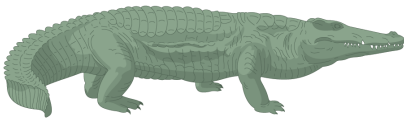
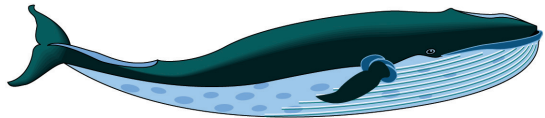
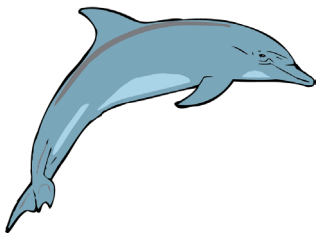
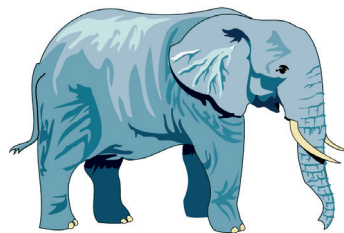


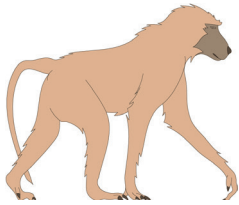
8.



9.

やせいどうぶつ (野生動物)

とら (虎)
tigre *tora*ライオン
lion *raion*わに (鱷)
crocodile *wani*くじら (鯨)
baleine *kujira*いるか (海豚)
dauphin *iruka*ぞう (象)
éléphant *zô*



さる (猿)
singe **saru**



くま (熊)
ours **kuma**



カンガルー
kangourou **kangarû**



きつね (狐)
renard **kitsune**

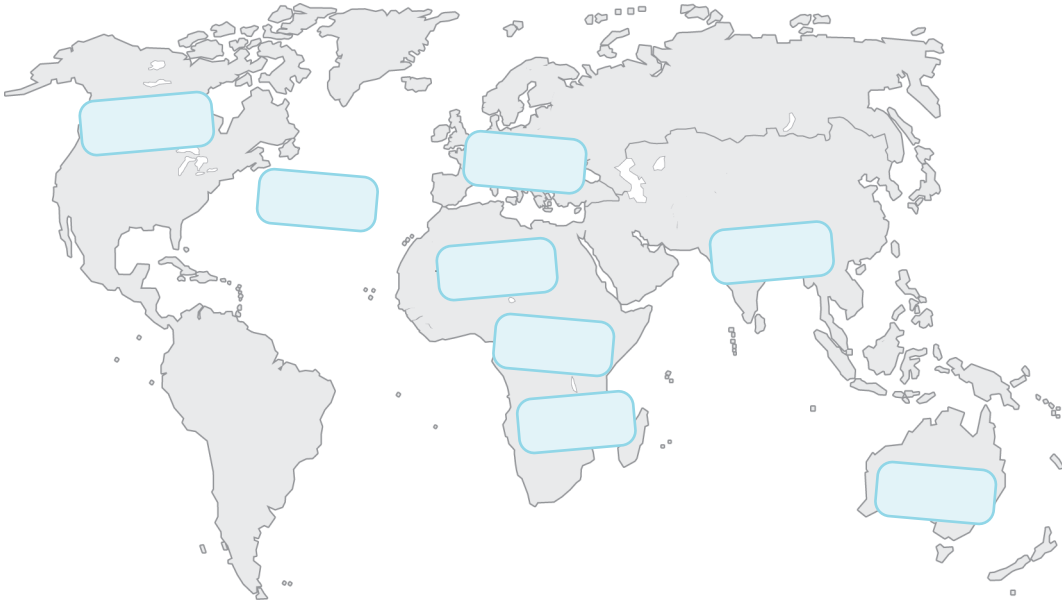


きりん (麒麟)
girafe **kirin**

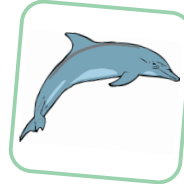
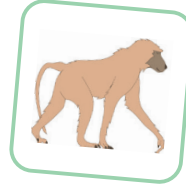


へび (蛇)
serpent **hebi**

1 Où peux-tu rencontrer ces animaux ? Replace-les sur la carte.



2 Classe les animaux selon leur alimentation.



Herbivores, frugivores

Carnivores, piscivores

.....

.....

.....

.....

.....

.....

.....

.....

.....

.....

3 Dans chaque série se dissimule un intrus. Entoure-le.

1. とら きつね ライオン

2. ぞう きりん くじら

3. くま へび わに

4. いるか くじら さる